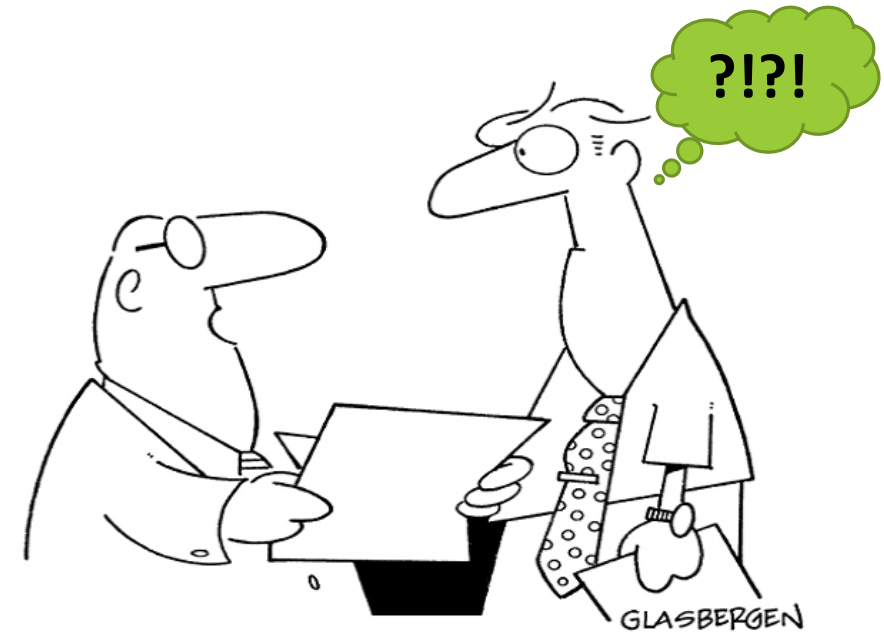


Social (Engineering) Innovation – What Is It and Why Now?



"I want you to find a bold and innovative new way to do everything exactly the same way we've been doing it for 25 years."



The **GREENLAND® Group of Companies** includes an “SME Collaborative” of professional engineering companies, as well as urban design planning expertise.

The organization also strives to offer excellence in “niche environmental disciplines” by **developing “Smart” software systems and social impact technologies** with a health and wellness priority focus. This unique corporate brand includes project partnerships in Canada with NGOs, Indigenous People and all levels of government (aka ‘P3s’).

Since 1994, the GREENLAND® Group has been committed to developing **innovative solutions** with a **conservationist ethic** that respects the **environment and incorporates evidence-based science; open source code & open data Internet platforms, and with new / proprietary technologies that can also address climate change concerns (and opportunities).**



For more information visit,
www.grnland.com





PRESENT



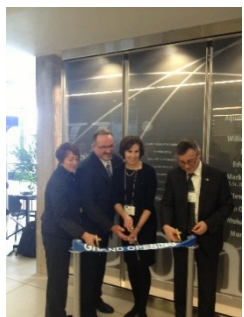


Season's Greetings

From all the staff at the **GREENLAND® Group**, warmest wishes for a blessed New Year and Peace on Earth.

In the spirit of the season, donations have been made in your honour to: Operation Smile, Collingwood Collegiate Institute, Canadian Red Cross, Meaford Hospital Foundation, My Friend's House Collingwood Crisis Centre, Credit Valley Foundation Landscape for Life, Leprosy Mission of Canada, Royal Victoria Hospital, Home Horizon, Princess Margaret Cancer Foundation, Toronto Ride to Conquer Cancer, Collingwood General & Marine Hospital, United Way, Stollery Children's Hospital Foundation and Plan Canada.





**PAYING
IT
FORWARD!**



4

CLOSER TO HOME - Fast Forward to the 'Internet of Things' (aka SMART) Intelligent Data and Technology Revolution!

5



Collingwood
SMART STORMWATER PILOT PROJECT



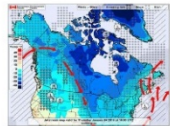
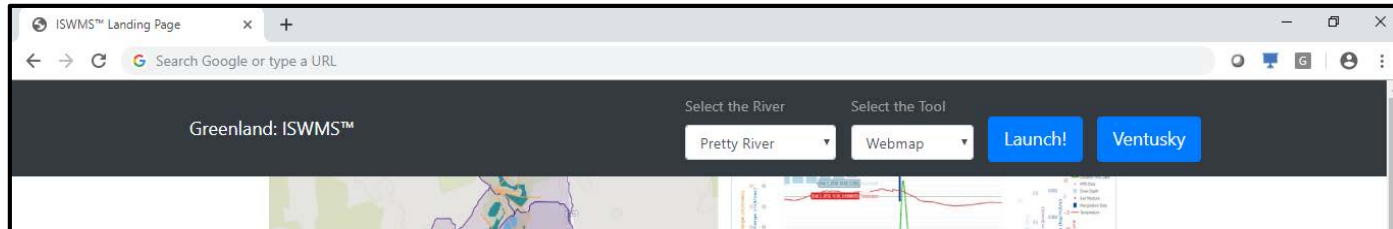
www.collingwoodpilotproject.com



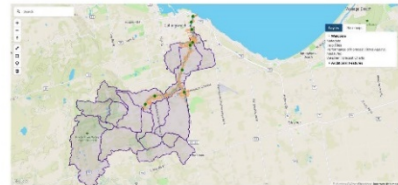


CLOSER TO HOME - Fast Forward to the 'Internet of Things' (aka SMART) Intelligent Data and Technology Revolution!

7



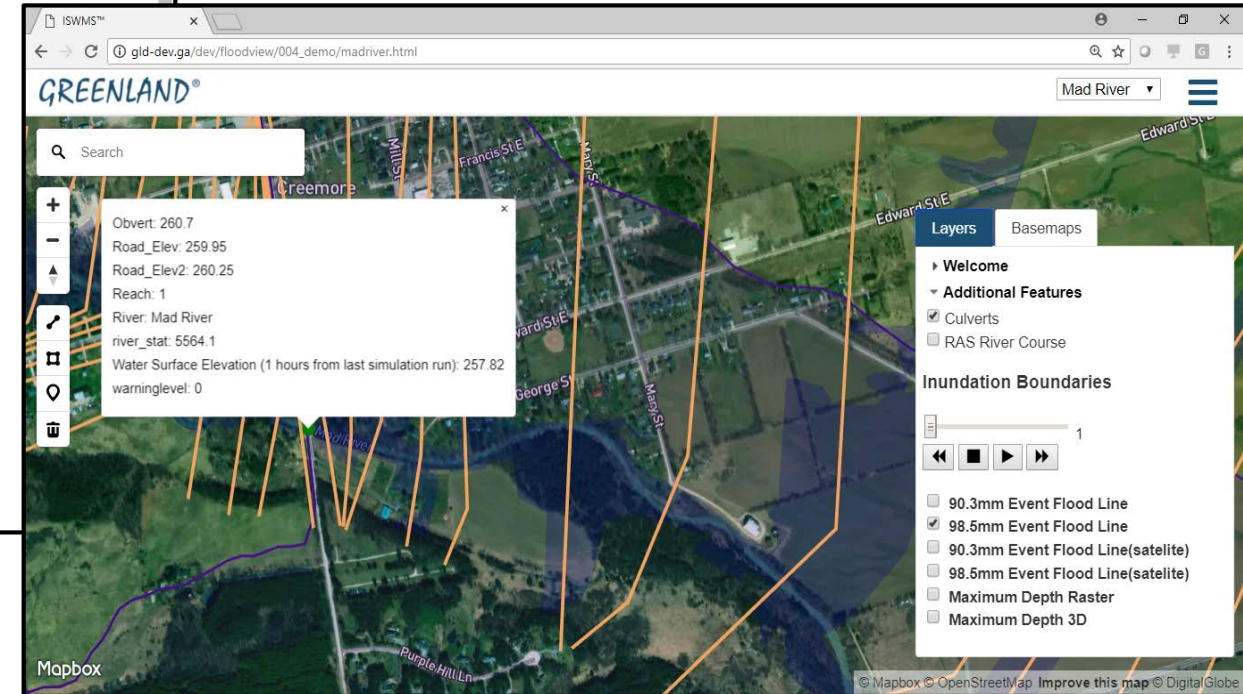
ENHANCED FLOOD RISK EMERGENCY PREPAREDNESS PLAN
NATIONAL DISASTER MITIGATION PROGRAM
County of Simcoe
September 26, 2018



PREPARED FOR:
County of Simcoe



PREPARED BY:
Greenland International Consulting Ltd.



Where Will The Journey Continue?

HUME INNOVATION HUB

A SMART BUSINESS AND COMMUNITY ECOSYSTEM




CORTEL GROUP


GREENLAND
Group of Companies

COMING SOON ————— WWW.HUMEHUB.COM



Hume Innovation Hub (www.humehub.com)

9

